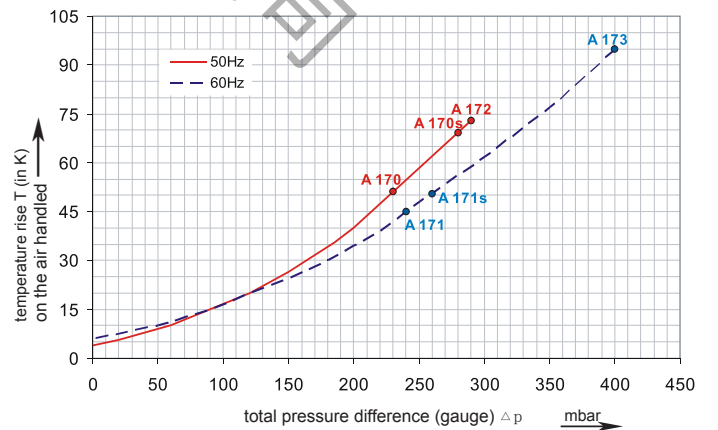
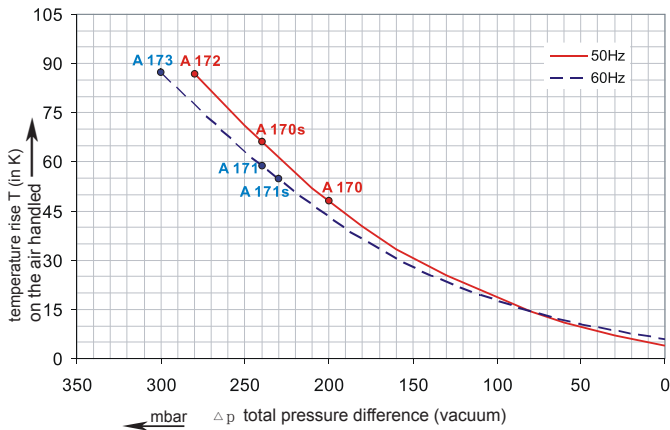
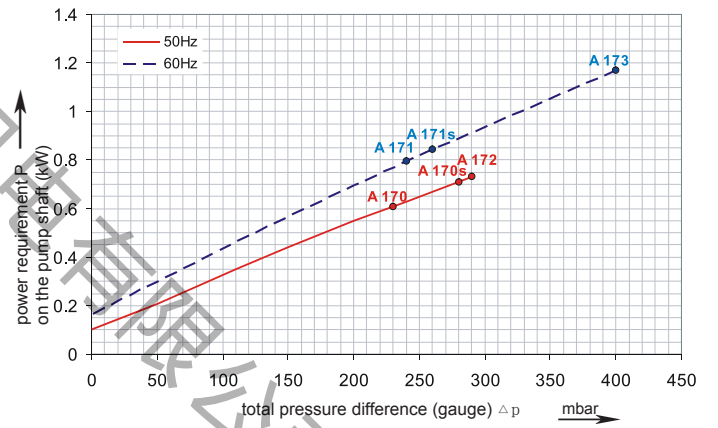
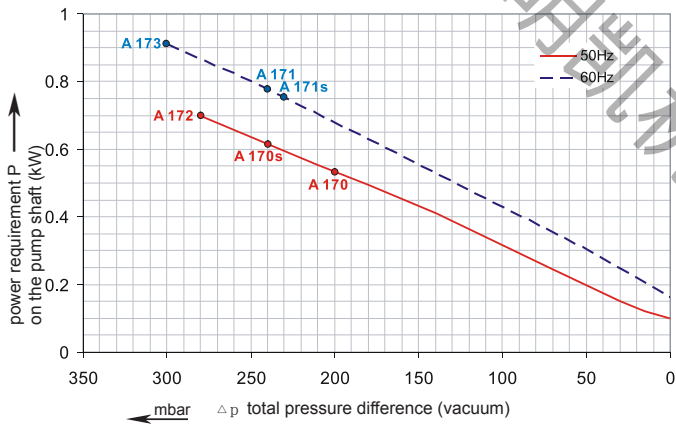
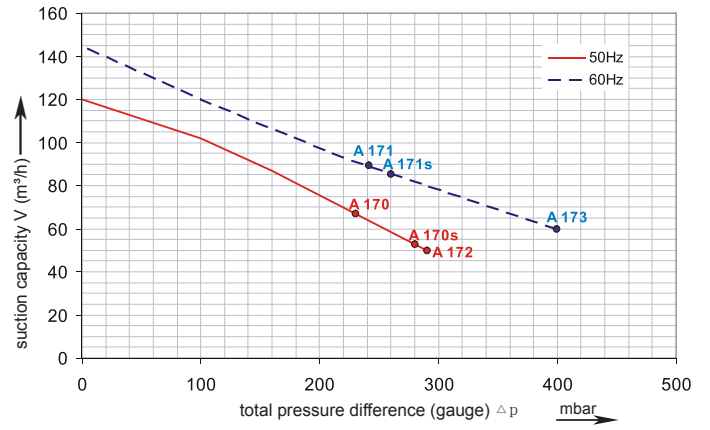
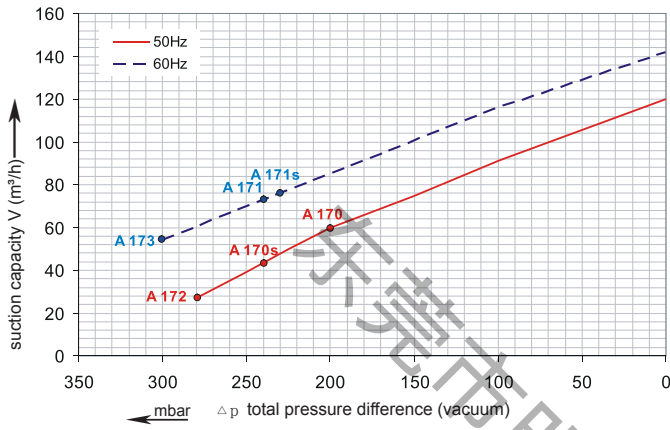




Date sheet 2MV 320

真空性能曲线

压缩性能曲线



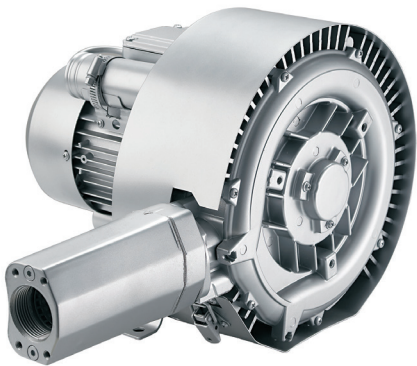
性能曲线基于温度为15° C、大气压为1013毫巴的空气，公差为+/- 10%。总压差适用于最高25° C的吸入温度和环境温度。

每种2MV型都可以在规定的总性能曲线范围内作为真空泵和压缩机连续运行。

选型和订购参数

Type 2MV 320

Curve No.	Order No.	Fre- quency	Rated power	Input voltage		Input current			Permissible total differential pressure ²⁾		Sound pressure level ³⁾	Weight ca.
									Vacuum mbar	Compressor mbar		
		Hz	kW	V		A						
3~ 50/60 Hz IP55 isulation material class F 1)												
A 170	2MV320-H26	50	0.85	200D ... 240D	345Y...415Y	4.2D	2.4Y	-200	230	58	17	
A 171	2MV320-H26	60	0.95	220D ... 275D	380Y...480Y	4.0D	2.3Y	-240	240	60	17	
A 172	2MV320-H36	50	1.3	200D ... 240D	345Y...415Y	5.7D	3.3Y	-280	290	58	18	
A 173	2MV320-H36	60	1.5	220D ... 275D	380Y...480Y	6.0D	3.5Y	-300	400	60	18	
1~ 50/60 Hz IP55 with attached condenser for continuous operation												
A 170s	2MV320-A31	50	1.1	230		7.3		-240	280	58	17	
A 171s	2MV320-A31	60	1.3	230		8.3		-230	260	60	17	



Other voltage ranges		
2MV320		
50Hz	60Hz	↑ ↑
3~		
185...225 V D/320...390 V Y	200...240 V D/345...415 V Y	H 1
200...240 V D/345...415 V Y	200...275 V D/380...480 V Y	H 6
345...415 V D	380...480 V D	H 7
500 V D	575VD	C 5

Further voltage range on request; please quote in plain text.

电机是根据DIN EN 60 034 / DIN IEC 34-1和温度等级f设计的 对于三相电机，固定电压的公差为+/- 10%，电压范围的公差为+/- 5%。单相电机的设计公差为+/- 5%。如果只有90%的最大允许压力用于连续运行，那么允许电压范围增加到+/- 10%。